



STOCKTAKER
MEDITECH EDITION

STOCKTAKER

FOR MEDITECH MATERIALS MANAGEMENT MODULE

www.StockTakerSoftware.com

Introduction

1. Taking Stock
 - 1.1 Features
 - 1.2 Requirements
 - 1.3 Supported Handhelds
2. Schedule Carts
 - 2.1 Features
 - 2.2 Requirements
3. How it Works
4. Contact Information



STOCKTAKER INTRODUCTION

StockTaker is a handheld application used in conjunction with MEDITECH's Materials Management Module that allows you to perform MEDITECH stock take procedures wirelessly. StockTaker works by scanning MEDITECH barcodes for quick data capture. We believe it will make your your stock take procedures more efficient and reliable.

If you have questions about StockTaker and how to integrate it into your MEDITECH Materials Management Module, we invite you to contact us directly.

Sincerely,

Geoff Kliza

Managing Partner / Business Development

Visit us online for more information or to schedule an online demo of StockTaker.

www.StockTakerSoftware.com
info@StockTakerSoftware.com



STOCKTAKER
MEDITECH EDITION

www.StockTakerSoftware.com

Introduction

1. Taking Stock

- 1.1 Features
- 1.2 Requirements
- 1.3 Supported Handhelds

2. Schedule Carts

- 2.1 Features
- 2.2 Requirements

3. How it Works

4. Contact Information



Visit us online for more information or to schedule an online demo of StockTaker.

www.StockTakerSoftware.com
info@StockTakerSoftware.com

STOCKTAKER

FOR MEDITECH MATERIALS MANAGEMENT MODULE

1. TAKING STOCK

StockTaker allows a user to perform a MEDITECH stock take with an inexpensive handheld device. StockTaker extracts cart lists from MEDITECH and downloads them to a selected schedule. Once a stock take is complete, the data is uploaded and transferred to the MEDITECH database.

1.1 Features

- Reduces the need for end users to be trained in MEDITECH systems
- Automatically downloads the cart lists for each selected schedule, and generates the file containing the stock take information to be uploaded into MEDITECH
- Supports MEDITECH exchange cart, department issue, department return, physical inventory, and inventory restock requisitions
- Allows for stock taking at remote facilities and for this information to be transmitted back to a central data store



1.2 Requirements

- ActiveSync 4.0 or greater
- Microsoft Pocket PC 2003 or Windows Mobile 5 / 6

1.3 Supported Handhelds

- Motorola Symbol
- Honeywell Dolphin
- Intermec (available Q2 2009)
- HP iPAQ 110 Handheld



Introduction

1. Taking Stock
 - 1.1 Features
 - 1.2 Requirements
 - 1.3 Supported Handhelds
- 2. Schedule Carts**
 - 2.1 Features
 - 2.2 Requirements
3. How it Works
4. Contact Information

2. SCHEDULE CARTS

The Scheduler application allows for the creation and viewing of stock take schedules. It works hand in hand with the StockTaker application by verifying that all the required stock lists have been extracted from MEDITECH.

2.1 Features

- The scheduler identifies the days that the stock take is to be performed for each cart
- Scheduler is accessible by remote facilities via a network connection
- Provides the ability to set up users with different levels of access to the schedules

2.2 Requirements

- Microsoft Access 2003 or greater
- Internet Explorer 6.0 or greater
- Windows XP Professional, Windows Server 2003 or 2008



Visit us online for more information or to schedule an online demo of StockTaker.

www.StockTakerSoftware.com
info@StockTakerSoftware.com

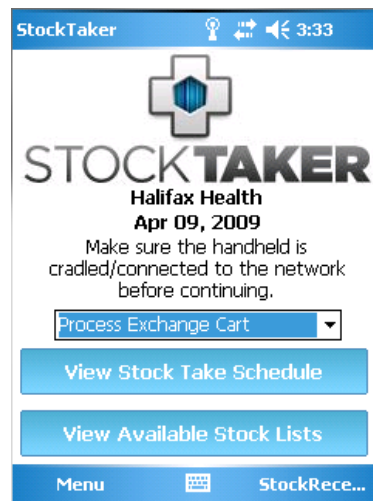
Introduction

- 1. Taking Stock
 - 1.1 Features
 - 1.2 Requirements
 - 1.3 Supported Handhelds
- 2. Schedule Carts
 - 2.1 Features
 - 2.2 Requirements
- 3. How it Works
- 4. Contact Information

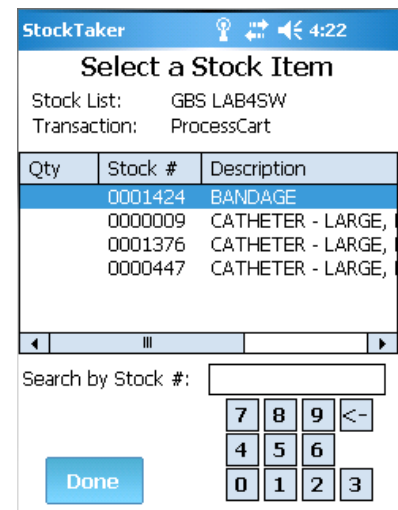
3. HOW IT WORKS

StockTaker works through 4 simple steps:

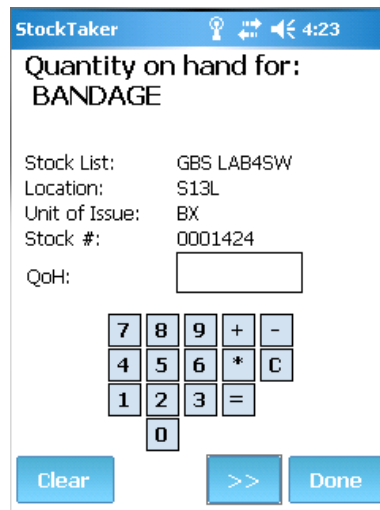
Step 1 - Open StockTaker



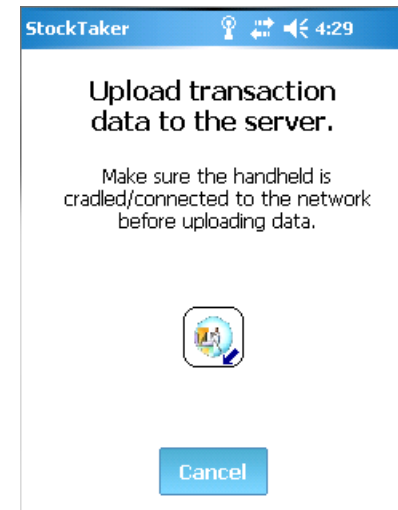
Step 2 - Select / Scan Item



Step 3 - Take Stock



Step 4 - Upload Data



Visit us online for more information or to schedule an online demo of StockTaker.

www.StockTakerSoftware.com
info@StockTakerSoftware.com



STOCKTAKER

FOR MEDITECH MATERIALS MANAGEMENT MODULE

www.StockTakerSoftware.com

Introduction

1. Taking Stock
 - 1.1 Features
 - 1.2 Requirements
 - 1.3 Supported Handhelds
2. Schedule Carts
 - 2.1 Features
 - 2.2 Requirements
3. How it Works
- 4. Contact Information**

4. CONTACT INFORMATION

We designed the StockTaker application from the ground up, keeping in mind the efficiency you need to perform stock take procedures effectively. We realize that an inaccurate count on supplies and remaining stock can affect your day to day operations.

Moreover, our goal was to help hospitals and other organizations using the MEDITECH system take advantage of the handheld wireless technology available today. We believe our application will help you perform your stock take accurately and efficiently.

We invite you to contact us with any questions or inquiries you have about StockTaker. Our customer service team would be pleased to provide you an online demo of the StockTaker interface. For more information, contact us:

StockTaker

#242 9743 - 51 Avenue
Edmonton, AB T6E 4W8
Phone: 780.634.2979
Fax: 780.669.5868

Web: www.StockTakerSoftware.com
Email: info@StockTakerSoftware.com



Visit us online for more information or to schedule an online demo of StockTaker.

www.StockTakerSoftware.com
info@StockTakerSoftware.com

© Copyright 2009 StockTakerSoftware.com, a division of Airshed Systems Inc.